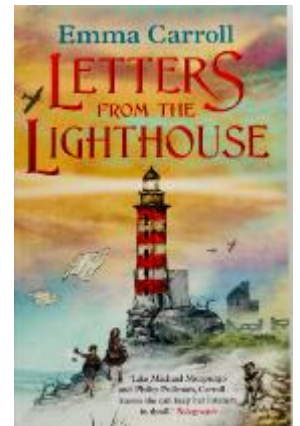


Letters from the Lighthouse

and the role of the Spitfire in WWII

Year 5 Spring 2

Rationale: Emma Carroll has been given the title of 'Queen of Historical Fiction'. Year 5 are intending to find out as to why she has been awarded this accolade through studying one of her books - 'Letters from the Lighthouse'. In order to do this, we will be investigating the events leading up to World War from the signing of the Treaty of Versailles, to the culmination of the Battle of Britain. We will be thinking like historians, deliberating the validity of different sources of evidence and exploring the concepts of 'evacuation' and 'rationing'. The children will write fact-based evacuee letters from the perspective of the characters in our book. They will also be designing and making a WWII rationing turnover in DT before concluding our work by investigating the role of the Spitfire and Southampton in WWII and where evacuation took place to from our home city.



Lead Subject: English

We will be undertaking an in-depth book study of 'Letters from the Lighthouse'. We will focus on making inferences about characters' thoughts, feelings and motives from their actions as well as continuing to apply our reading VIPERS approach in sessions. We will be imagining ourselves to be evacuees, writing letters pretending to be an evacuee writing home to their parents during the war.

Lead Subject: DT

Our food technology unit will involve children adapting a basic rationing recipe to create a turnover that could have been made during wartime Britain. The children will investigate different wartime foods considering their taste, appearance and texture. The children will look at the available ingredients in wartime Britain, designing and making a tasty wartime turnover.

Lead Subject: History

During history lessons we will learn about how, why and when WWII began and the countries involved. The children will gain an understanding of the chronology of the war before focussing on the themes of evacuation and rationing. We will also be learning about why the Battle of Britain is considered to be a significant turning point in the timeline of WWII, using a variety of sources of evidence to help us.

Applied Subject: ICT

We will create our own model lighthouses that will use crumble control boards to turn the lights on and off and guide the ships to safety.

Applied Subject: Geography

We will identify countries involved in WWII and locate them within the world.



School Value: Resilience

We will use our historical knowledge to accurately portray how children needed to be resilient during WWII.

Maths:

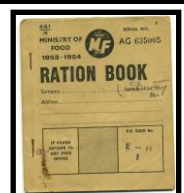
In maths we will be continuing our multiplication and division learning journey. We will be learning how to use the formal 'bus stop' method for division and dividing up to 4 digit numbers.

Outcome: We will be answering the question as to whether we consider Emma Carroll to be Queen of historical fiction.

We will also celebrate the end of project through a dress-up WWII day, listen to 1940's music and try 1940's inspired food which will be part of your home learning. **WWII day is Wednesday 25th March.**

5 WEEKS

Home learning: You will need to create a recipe using World War II rationing ingredients, to be brought into school on our WWII day.



French:
Les vêtements -

P.E:
Team games/Dance

Music:
Rap

R.E:
Jesus the law breaker

PDL:
Rights and Respect